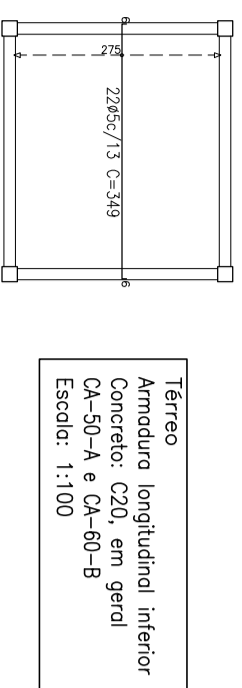
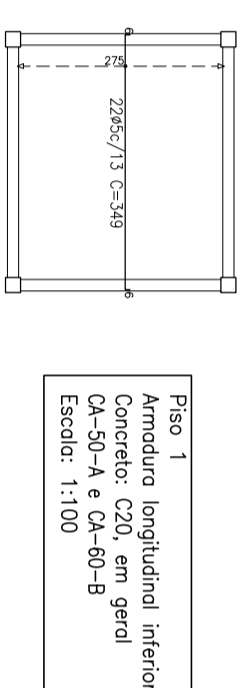


Resumo Aço Térreo	Comp. total (m)	Peso+10% (kg)
Armadura longitudinal inferior CA-60-B	76,8	13



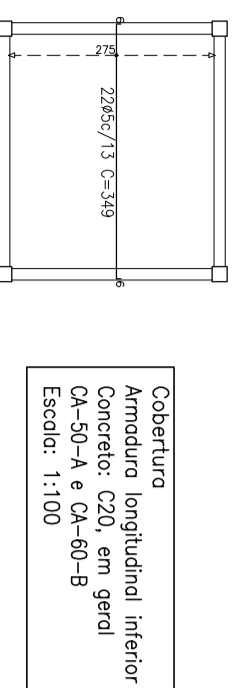
Térreo  
Armadura longitudinal inferior  
Concreto: C20, em geral  
CA-50-A e CA-60-B  
Escala: 1:100

Resumo Aço Piso 1	Comp. total (m)	Peso+10% (kg)
Armadura longitudinal inferior CA-60-B	76,8	13



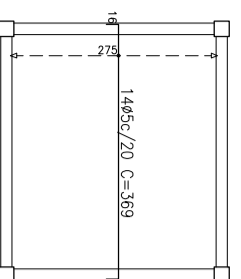
Piso 1  
Armadura longitudinal inferior  
Concreto: C20, em geral  
CA-50-A e CA-60-B  
Escala: 1:100

Resumo Aço Cobertura	Comp. total (m)	Peso+10% (kg)
Armadura longitudinal inferior CA-60-B	76,8	13



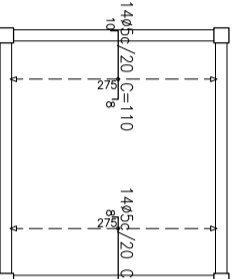
Cobertura  
Armadura longitudinal inferior  
Concreto: C20, em geral  
CA-50-A e CA-60-B  
Escala: 1:100

Resumo Aço Térreo	Comp. total (m)	Peso+10% (kg)
Armadura longitudinal superior CA-60-B	51,7	9



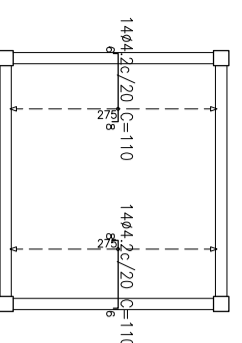
Térreo  
Armadura longitudinal superior  
Concreto: C20, em geral  
CA-50-A e CA-60-B  
Escala: 1:100

Resumo Aço Piso 1	Comp. total (m)	Peso+10% (kg)
Armadura longitudinal superior CA-60-B	30,8	5



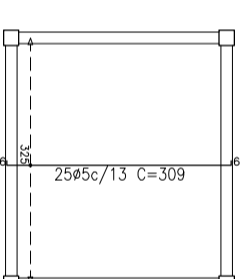
Piso 1  
Armadura longitudinal superior  
Concreto: C20, em geral  
CA-50-A e CA-60-B  
Escala: 1:100

Resumo Aço Cobertura	Comp. total (m)	Peso+10% (kg)
Armadura longitudinal superior CA-60-B	30,8	4



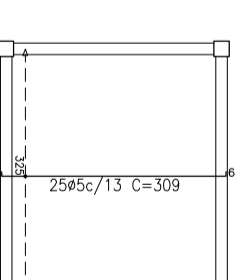
Cobertura  
Armadura longitudinal superior  
Concreto: C20, em geral  
CA-50-A e CA-60-B  
Escala: 1:100

Resumo Aço Térreo	Comp. total (m)	Peso+10% (kg)
Armadura transversal inferior CA-60-B	77,3	13



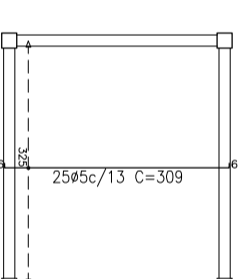
Térreo  
Armadura transversal inferior  
Concreto: C20, em geral  
CA-50-A e CA-60-B  
Escala: 1:100

Resumo Aço Cobertura	Comp. total (m)	Peso+10% (kg)
Armadura transversal inferior CA-60-B	77,3	13



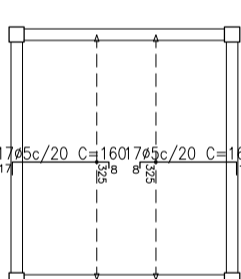
Cobertura  
Armadura transversal inferior  
Concreto: C20, em geral  
CA-50-A e CA-60-B  
Escala: 1:100

Resumo Aço Piso 1	Comp. total (m)	Peso+10% (kg)
Armadura transversal inferior CA-60-B	77,3	13



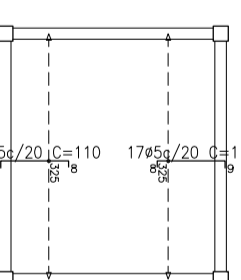
Piso 1  
Armadura transversal inferior  
Concreto: C20, em geral  
CA-50-A e CA-60-B  
Escala: 1:100

Resumo Aço Térreo	Comp. total (m)	Peso+10% (kg)
Armadura transversal superior CA-60-B	54,4	9



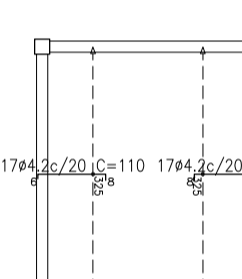
Térreo  
Armadura transversal superior  
Concreto: C20, em geral  
CA-50-A e CA-60-B  
Escala: 1:100

Resumo Aço Piso 1	Comp. total (m)	Peso+10% (kg)
Armadura transversal superior CA-60-B	37,4	6



Piso 1  
Armadura transversal superior  
Concreto: C20, em geral  
CA-50-A e CA-60-B  
Escala: 1:100

Resumo Aço Cobertura	Comp. total (m)	Peso+10% (kg)
Armadura transversal superior CA-60-B	37,4	4



Cobertura  
Armadura transversal superior  
Concreto: C20, em geral  
CA-50-A e CA-60-B  
Escala: 1:100

## PREFEITURA MUNICIPAL DE CANDIOTA

SECRETARIO DE OBRAS

PAULO FEIJÓ

RESPONSÁVEL TÉCNICO

MARCELO VAZ LEAL  
ENGENHEIRO CIVIL - CREM 85375/20

LOCAL

REDE DE ESGOTO BAIRRO SEIVAL

ÁREA

DATA  
NOV/2023

DESENHO

PM CANDIOTA

ESPECIFICAÇÃO

ESTRUTURAL FOSSA E FILTRO ANAERÓBIO

ESCALA

1/100

PRANCHIA

EST-01/02